



Department of Public Works  
**Engineering Division**  
Robert F. Phillips, P.E., City Engineer

City-County Building, Room 115  
210 Martin Luther King, Jr. Boulevard  
Madison, Wisconsin 53703  
Phone: (608) 266-4751  
Fax: (608) 264-9275  
[engineering@cityofmadison.com](mailto:engineering@cityofmadison.com)  
[www.cityofmadison.com/engineering](http://www.cityofmadison.com/engineering)

**Assistant City Engineer**

Michael R. Dailey, P.E.

**Principal Engineer 2**

Gregory T. Fries, P.E.

**Principal Engineer 1**

Christina M. Bachmann, P.E.

Eric L. Dundee, P.E.

John S. Fahrney, P.E.

Christopher J. Petykowski, P.E.

**Facilities & Sustainability**

Jeanne E. Hoffman, Manager

**Operations Manager**

Kathleen M. Cryan

**Mapping Section Manager**

Eric T. Pederson, P.S.

**Financial Manager**

Steven B. Danner-Rivers

April 19, 2017

**NOTICE OF ADDENDUM:  
ADDENDUM 1**

**CONTRACT NO. 7850  
YUMA DRIVE RESURFACING ASSESSMENT DISTRICT - 2017**

Revise and amend the contract document(s) for the above project as stated in this addendum, otherwise, the original document shall remain in effect.

Revise and amend the contract document(s) for the above project as stated in this addendum, otherwise, the original document shall remain in effect.

**PLANS:**

**REMOVE**

- Remove Sheet U-8
- Remove Sheets W-1 to W-11

**INSERT**

- Insert Sheets U-8 (revised 4-17-17)
  - Revised sheet to clarify S-11 structure type in Storm Sewer Schedule.
- Insert Sheets W-1 to W-11 (revised 4-14-17)
  - W-1: Revised S Midvale connection and insulated water lateral.
  - W-2: Service laterals insulated at storm sewer crossings.
  - W-3: Service reconnect at 4108 Yuma and Hiawatha intersection valves.
  - W-4: Revised Cherokee intersection connections.
  - W-5: (reprint only)
  - W-6: Revised S Midvale connection information.
  - W-7: (reprint only)
  - W-8: (reprint only)
  - W-9: Revised Cherokee connection information.
  - W-10: Revised Cherokee connection information.
  - W-11: Revised estimate of materials based on above changes.

**SPECIAL PROVISIONS:**

None

**PROPOSAL:**

A summary of the changes to the proposal is as follows:

Action	Bid Item	Description	Quantity	Units
MODIFY	50401	12 INCH TYPE I RCP STORM SEWER PIPE	129	L.F.
MODIFY	50403	18 INCH TYPE I RCP STORM SEWER PIPE	117.5	L.F.
MODIFY	50434	18 INCH TYPE II PAVEMENT STORM SEWER PIPE	252	L.F.
MODIFY	70002	FURNISH AND INSTALL 6 INCH PIPE & FITTINGS	120	L.F.
MODIFY	70003	FURNISH AND INSTALL 8 INCH PIPE & FITTINGS	2440	L.F.
MODIFY	70031	FURNISH AND INSTALL 6-INCH WATER VALVE	9	EACH
MODIFY	70032	FURNISH AND INSTALL 8-INCH WATER VALVE	11	EACH
MODIFY	70040	FURNISH, INSTALL AND SALVAGE HYDRANT	6	EACH
MODIFY	70080	CUT-IN—OR CONNECT TO EXISTING WATER SYSTEM	6	EACH
MODIFY	70081	FURNISH EXCAVATION AND DITCH FOR LIVE TAP	1	EACH
MODIFY	70082	CUT OFF EXISTING WATER MAIN	9	EACH
MODIFY	70090	ABANDON WATER VALVE BOX	12	EACH
MODIFY	70101	FURNISH AND INSTALL STYROFOAM	144	L.F.

-----  
Please acknowledge this addendum on page E1 of the contract documents and/or in Section E: Bidder's Acknowledgement on Bid Express.

Electronic version of these documents can be found on the Bid Express web site at:

<http://www.bidexpress.com>

If you are unable to download plan revisions associated with the addendum, please contact the Engineering office at 608-266-4751 receive the material by another route.




---

Robert F. Phillips, P.E., City Engineer

RFP: cwd, arw

# STORM SEWER SCHEDULE

\*REV 4/17/2017 KDF

YUMA RESURFACING WITH UTILITIES	SHEET NO.
PROJECT NO. 11435	U-8
STORM SEWER SCHEDULE	
CITY OF MADISON	

## PROPOSED STORM STRUCTURES

STRUC. NO.	STATION	LOCATION (OFFSET)	TYPE	TOP OF CASTING	E.I.	DEPTH	NOTES
<b>YUMA DRIVE</b>							
S-1A	18+63.29	LT-52.08	3X3 SAS	951.96	947.48	4.48	W/R-1550-0054
S-1	18+37.76	LT-47.50	TAP	-	948.30	-	-
S-2	18+07.72	LT-12.50	3X6 SAS	954.26	949.10	5.16	FP, W/R-3067-7004-V
S-2A	18+05.44	RT-14.50	H INLET	954.04	949.83	4.21	W/R-3067-7004-V
S-2B	17+96.44	RT-14.50	H INLET	954.46	950.39	4.07	W/R-3067-7004-V
S-2C	18+39.12	RT-41.50	H INLET	954.27	950.48	3.79	W/R-3067-7004-V
S-2D	18+70.11	RT-42.22	H INLET	953.97	950.88	3.09	W/R-3067-7004-V
S-3	16+71.47	LT-12.50	3X6 SAS	958.99	954.00	4.99	FP, W/R-3067-7004-V
S-3A	16+67.15	RT-14.50	H INLET	959.28	955.22	4.06	W/R-3067-7004-V
S-4	14+37.47	LT-12.50	3X6 SAS	963.05	958.04	5.01	FP, W/R-3067-7004-V
S-5	14+26.66	RT-18.28	TERRACE INLET II	963.71	959.68	4.03	(2), FP
S-10	28+01.00	LT-21.20	6X6 SAS	912.34	907.74	4.60	(3), W/R-1550-0054
* S-11	27+23.40	LT-10.96	<b>TREATMENT DEVICE</b>	915.52	908.77	6.75	(4), (5)
S-12	24+78.16	LT-14.68	3X3 SAS	934.56	930.19	4.37	W/R-3067-7004-V
S-12A	24+78.49	RT-43.21	3X3 SAS	935.34	931.01	4.33	W/R-3067-7004-V
S-12B	24+77.01	RT-51.01	H INLET	935.75	931.08	4.67	FP, W/R-3067-7004-V
S-12C	24+37.51	RT-44.67	H INLET	936.49	932.60	3.89	W/R-3067-7004-V
S-12D	24+40.36	RT-51.58	H INLET	936.55	932.94	3.61	W/R-3067-7004-V
S-12E	24+04.87	RT-15.87	H INLET	937.02	933.24	3.78	W/R-3067-7004-V
S-13	23+60.71	LT-14.72	3X3 SAS	937.70	933.37	4.33	W/R-3067-7004-V
S-14	22+40.83	LT-14.62	3X3 SAS	940.04	936.09	3.95	W/R-3067-7004-V
S-15	20+88.55	LT-14.50	H INLET	944.26	940.30	3.96	W/R-3067-7004-V
S-15A	20+87.83	RT-14.50	H INLET	944.28	940.69	3.59	W/R-3067-7004-V
S-20	28+46.88	LT-26.19	COLLAR	-	908.30	-	-
S-21	28+67.23	LT-14.20	H INLET	913.07	909.40	3.67	FP, W/R-3067-7004-V
S-30	28+11.75	RT-17.50	TAP	-	908.67	-	-
S-31	27+71.11	RT-25.50	H INLET	912.90	909.24	3.66	LP, W/R-3067-7004-VB
S-32	27+36.00	RT-13.90	H INLET	915.22	911.35	3.87	W/R-3067-7004-V

## PROPOSED STORM PIPES

PIPE NO.	FROM (DNSTM)	TO (UPSTM)	DISCH. E.I.	INLET E.I.	PLAN (PAY) LGTH (FT)	PIPE LGTH (FT)	SLOPE (%)	PIPE SIZE	TYPE	NOTES
<b>YUMA DRIVE</b>										
P-1A	S-1A	S-2	947.48	949.10	68.5	66	2.45%	24"	TYPE I	-
P-1	S-1	S-2	948.30	949.10	46	39.9	2.00%	24"	TYPE II	-
P-2	S-2	S-3	949.35	954.00	136	132.8	3.50%	21"	TYPE I	(1)
P-2A	S-2	S-2A	949.60	949.83	27	23.1	1.00%	18"	TYPE I	-
P-2B	S-2A	S-2B	950.33	950.39	9	6	1.00%	12"	TYPE II	-
P-2C	S-2A	S-2C	950.08	950.48	43.5	40	1.00%	15"	TYPE II	-
P-2D	S-2C	S-2D	950.73	950.88	31	29	0.50%	12"	TYPE I	-
P-3	S-3	S-4	954.00	958.04	234	231	1.75%	21"	TYPE I	(1)
P-3A	S-3	S-3A	954.75	955.22	27.5	23.3	2.00%	12"	TYPE I	-
P-4	S-4	S-5	958.29	959.68	32.5	27.7	5.00%	18"	TYPE I	-
P-10	S-10	S-11	907.94	908.77	78	74.2	1.12%	24"	TYPE I	-
P-11	S-11	S-12	911.27	930.19	244	240.1	7.88%	18"	TYPE II	-
P-12	S-12	S-13	930.44	933.37	120	117	2.50%	15"	TYPE I	-
P-12A	S-12	S-12A	930.19	931.01	58	54.8	1.50%	18"	TYPE I	-
P-12B	S-12A	S-12B	931.01	931.08	8	4.9	1.50%	18"	TYPE II	-
P-12C	S-12A	S-12C	931.26	932.60	41	38.5	3.48%	15"	TYPE I	-
P-12D	S-12C	S-12D	932.85	932.94	7.5	4.5	2.00%	12"	TYPE II	-
P-12E	S-12C	S-12E	932.85	933.24	42	38.6	1.00%	12"	TYPE II	-
P-13	S-13	S-14	933.37	936.09	124	121	2.25%	15"	TYPE I	-
P-14	S-14	S-15	936.09	940.30	156	153	2.75%	15"	TYPE I	-
P-15	S-15	S-15A	940.55	940.69	29	27	0.50%	12"	TYPE I	-
P-20	S-20	S-21	908.30	909.40	23.5	22	5.00%	12"	TYPE II	-
P-30	S-30	S-31	908.67	909.24	41.5	37.7	1.50%	12"	TYPE I	-
P-31	S-31	S-32	909.24	911.35	35.5	33.8	6.25%	12"	TYPE II	-

## ADJUST STORM STRUCTURES

STRUC. NO.	ID NO.	STATION	LOCATION (OFFSET)	TYPE	NOTES
<b>YUMA DRIVE</b>					
ADJ-1	AS 3862-002	28+01.00	LT-21.25	CATCHBASIN	3" OF EXISTING ADJUSTMENT
ADJ-2	AS 3862-003	28+11.75	RT-17.50	CATCHBASIN	3" OF EXISTING ADJUSTMENT

**NOTE:** PLAN LENGTH (PAY LENGTH) IS FROM CENTER OF STRUCTURE TO CENTER OF STRUCTURE. PIPE LENGTH IS ACTUAL LENGTH OF PIPE FROM STRUCTURE WALL TO STRUCTURE WALL. SLOPE CALCULATED USING PIPE LENGTH.

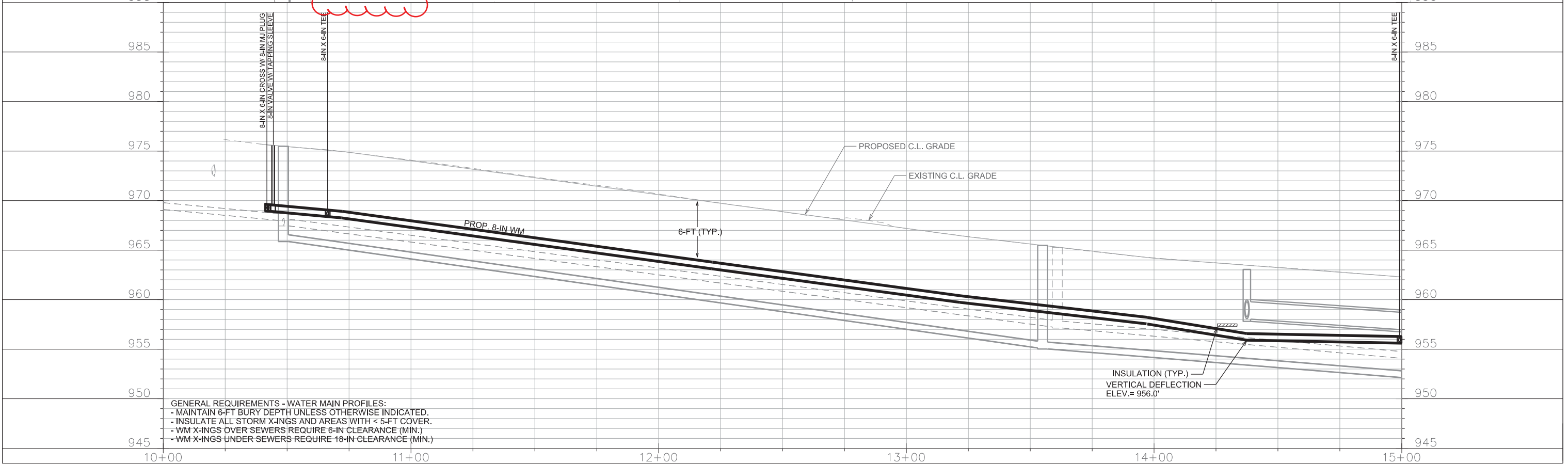
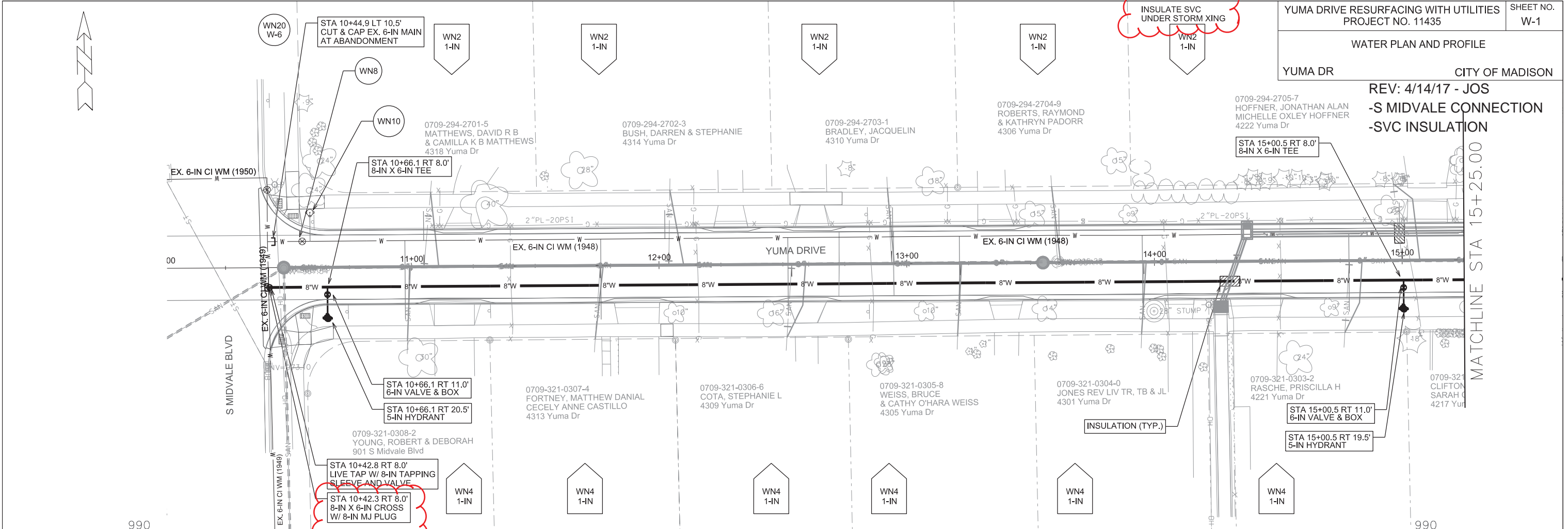
## SPECIFIC NOTES

- OFFSET PIPE FROM CENTER OF STRUCTURE TOWARD STREET CENTERLINE
- STRUCTURE SHALL BE CONSTRUCTED PER SHEET U-6
- CONTRACTOR SHALL REMOVE AND REPLACE 7' OF CMP DOWNSTREAM OF STRUCTURE AND SHALL BE INCIDENTAL TO STRUCTURE SURVEYOR TO CONFIRM THAT ALL INLET STATION / OFFSETS LINE UP WITH PROPOSED CURB AND GUTTER.
- STRUCTURE SHALL BE CONSTRUCTED PER S.D.D. 5.7.39 AND S.D.D. 5.7.39A AND SHALL BE PAID FOR UNDER BID ITEM 90031
- STRUCTURE SHALL BE CONSTRUCTED W/ TWIN [2] R-3067-7004-V, ONE [1] R-1550-0054, AND ONE [1] R-1877-EM

## STANDARD NOTES:

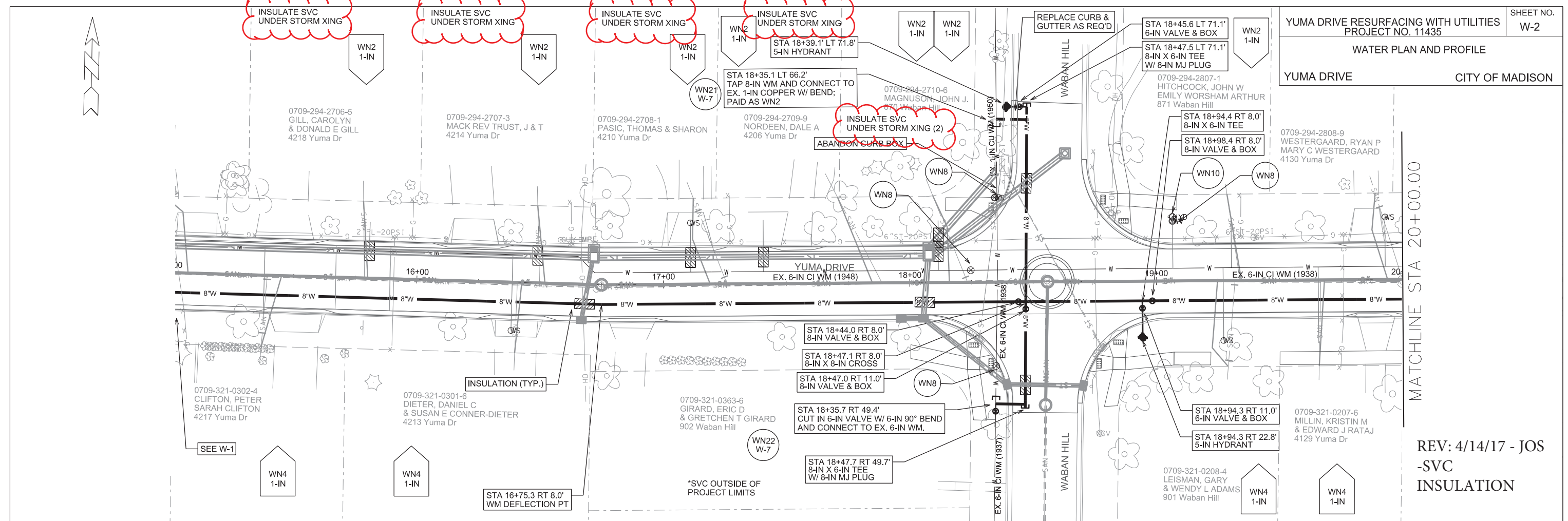
- ABBREVIATIONS: AE = APRON ENDWALL; RCP = REINFORCED CONCRETE PIPE; HERCP = HORIZONTAL ELLIPTICAL REINFORCED CONCRETE PIPE; DNA = DOES NOT APPLY; SAS = SEWER ACCESS STRUCTURE; LP = LOW POINT INLET STRUCTURE; FP = FIELD POURED STRUCTURE; TR = TOP OF CONCRETE ROOF; NCM = NO CROWN MATCH FOR PIPES; UD = UNDERDRAIN
- APPROXIMATE DISCHARGE E.I. GIVEN, ADJUST E.I. AND PIPE SLOPE IN THE FIELD.
- TOP OF CASTING GRADE GIVEN IS THE TOP OF CURB FOR INLET STRUCTURES AND THE FLOWLINE OF THE CLOSED CASTING FOR SAS's.
- TOP OF CONCRETE ROOF (TR) IS 1.25' BELOW TOP OF CASTING UNLESS OTHERWISE NOTED.
- ALL REINFORCED CONCRETE PIPES TO BE CLASS III UNLESS OTHERWISE NOTED.
- ALL STRUCTURES CALLED OUT AS FIELD POURED SHALL BE FIELD POURED. ALL OTHER STRUCTURES (NOT INDICATED AS FIELD POURED) SHALL BE SUBMITTED TO CITY ENGINEERING FOR APPROVAL IF PRECAST STRUCTURES ARE PREFERRED. CONTACT KYLE FRANK OF CITY ENGINEERING AT (608) 266-4098 FOR PRECAST APPROVALS, FAX SHOP DRAWINGS TO (608)264-9275, OR EMAIL SHOP DRAWINGS TO KFRANK@CITYOFMADISON.COM.

REV: 4/14/17 - JOS  
 -S MIDVALE CONNECTION  
 -SVC INSULATION



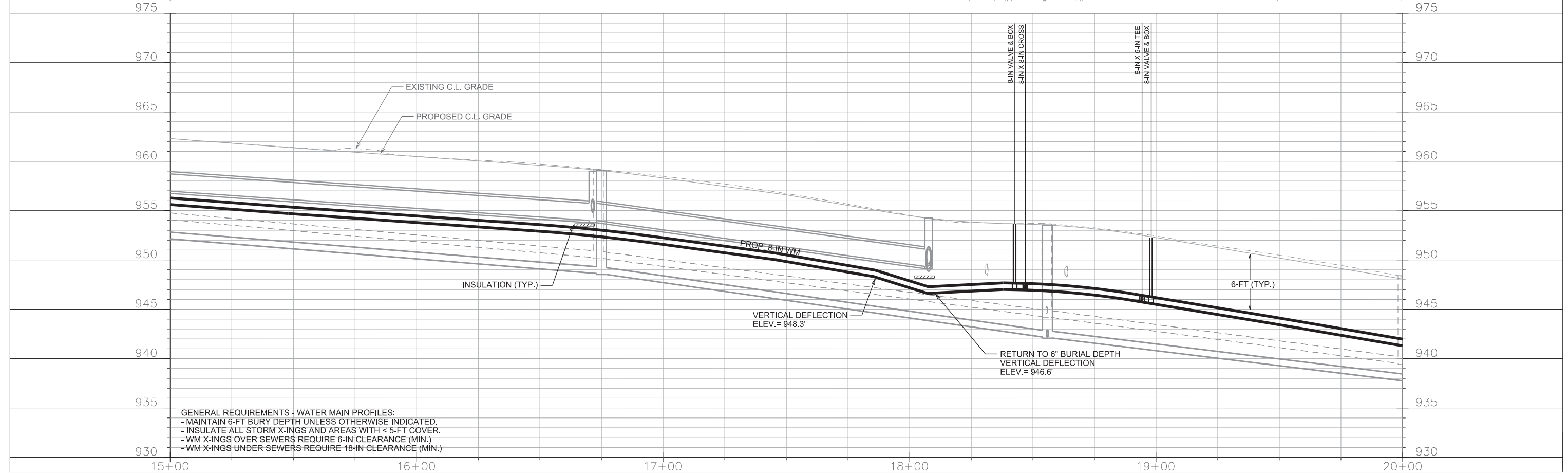
GENERAL REQUIREMENTS - WATER MAIN PROFILES:  
 - MAINTAIN 6-FT BURY DEPTH UNLESS OTHERWISE INDICATED.  
 - INSULATE ALL STORM X-INGS AND AREAS WITH < 5-FT COVER.  
 - WM X-INGS OVER SEWERS REQUIRE 6-IN CLEARANCE (MIN.)  
 - WM X-INGS UNDER SEWERS REQUIRE 18-IN CLEARANCE (MIN.)

PLOT SCALE: \_\_\_\_\_  
 PLOT NAME: \_\_\_\_\_  
 REV. DATE: \_\_\_\_\_  
 ORIGINATOR: CITY OF MADISON, STREETS DIVISION



MATCHLINE STA 20+00.00

REV: 4/14/17 - JOS  
 -SVC  
 INSULATION



GENERAL REQUIREMENTS - WATER MAIN PROFILES:  
 - MAINTAIN 6-FT BURY DEPTH UNLESS OTHERWISE INDICATED.  
 - INSULATE ALL STORM X-INGS AND AREAS WITH < 5-FT COVER.  
 - WM X-INGS OVER SEWERS REQUIRE 6-IN CLEARANCE (MIN.)  
 - WM X-INGS UNDER SEWERS REQUIRE 18-IN CLEARANCE (MIN.)

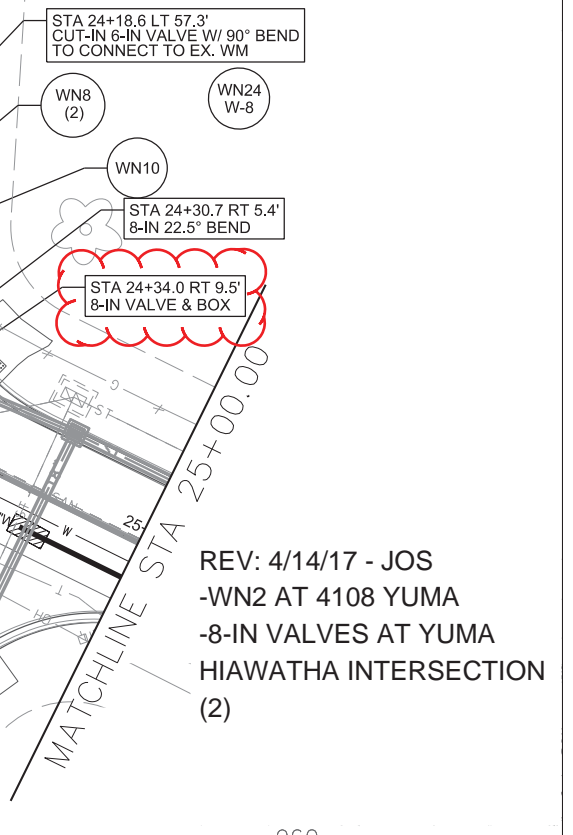
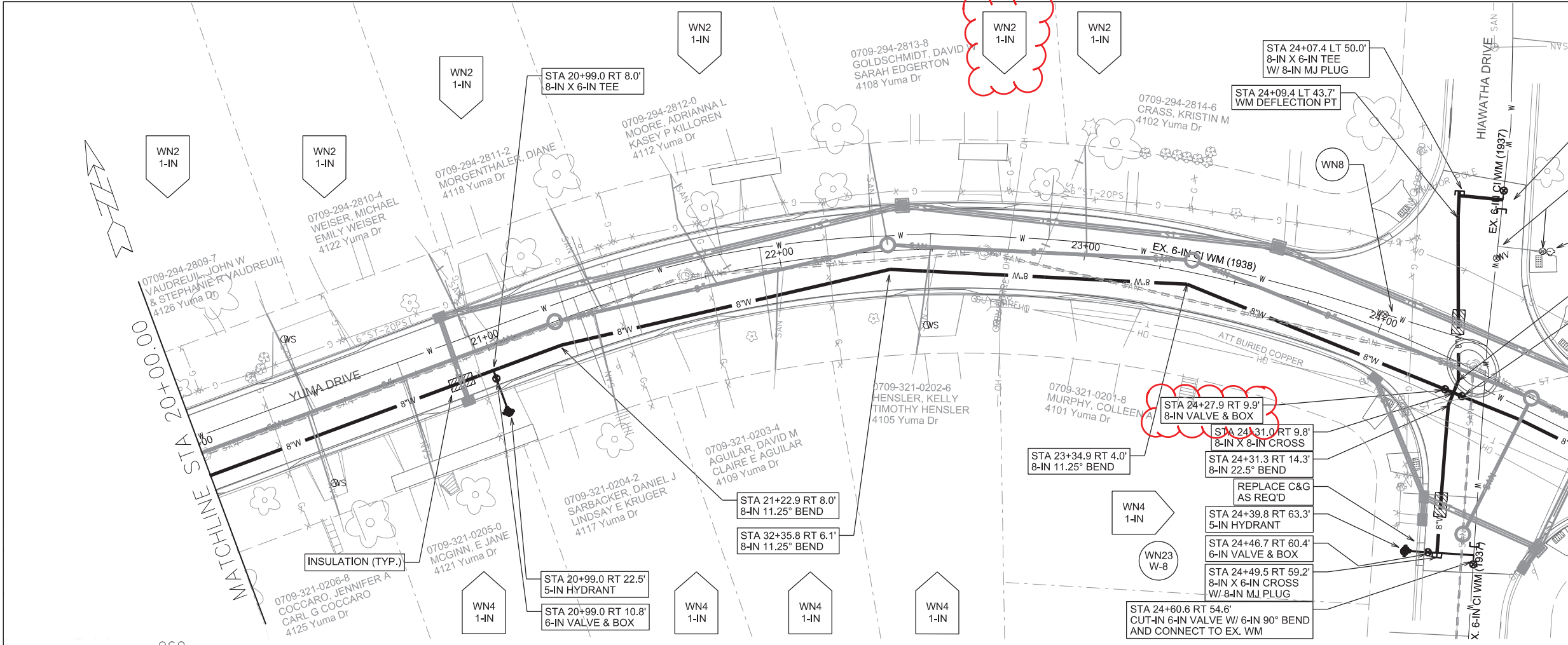
PLOT SCALE: \_\_\_\_\_

PLOT NAME: \_\_\_\_\_

REV. DATE: \_\_\_\_\_

ORIGINATOR: CITY OF MADISON, STREETS DIVISION





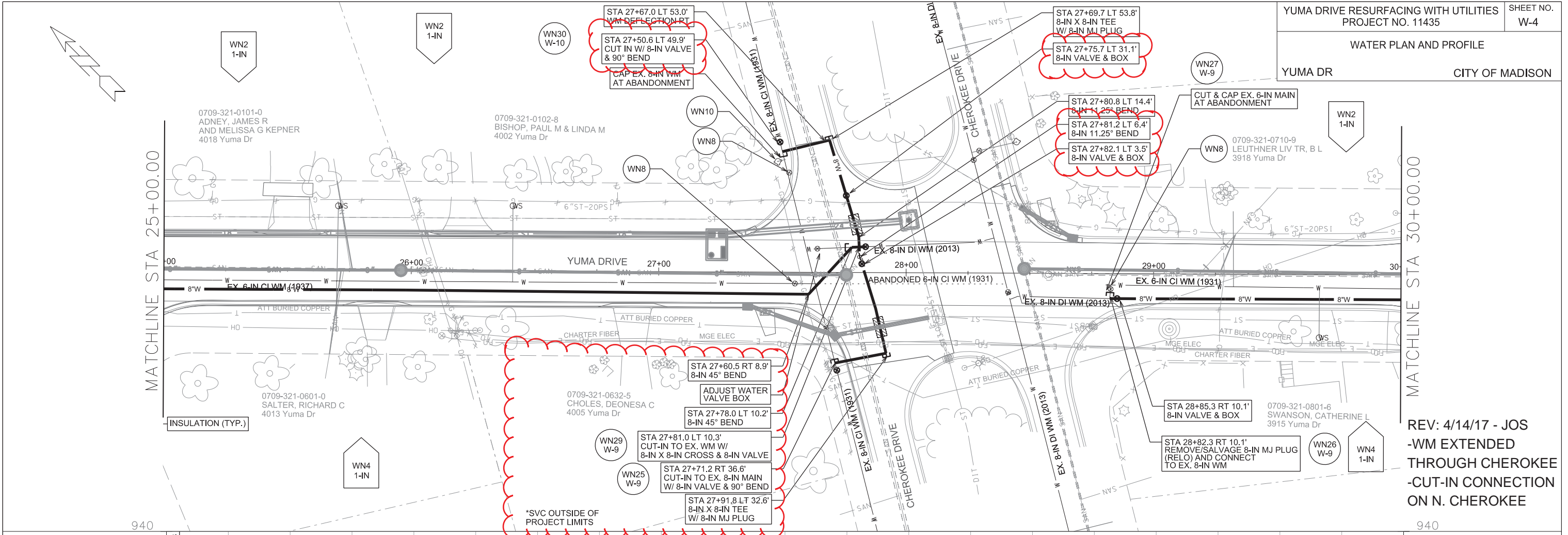
REV: 4/14/17 - JOS  
-WN2 AT 4108 YUMA  
-8-IN VALVES AT YUMA  
HIAWATHA INTERSECTION  
(2)

GENERAL REQUIREMENTS - WATER MAIN PROFILES:  
- MAINTAIN 6-FT BURY DEPTH UNLESS OTHERWISE INDICATED.  
- INSULATE ALL STORM X-INGS AND AREAS WITH < 5-FT COVER.  
- WM X-INGS OVER SEWERS REQUIRE 6-IN CLEARANCE (MIN.)  
- WM X-INGS UNDER SEWERS REQUIRE 18-IN CLEARANCE (MIN.)

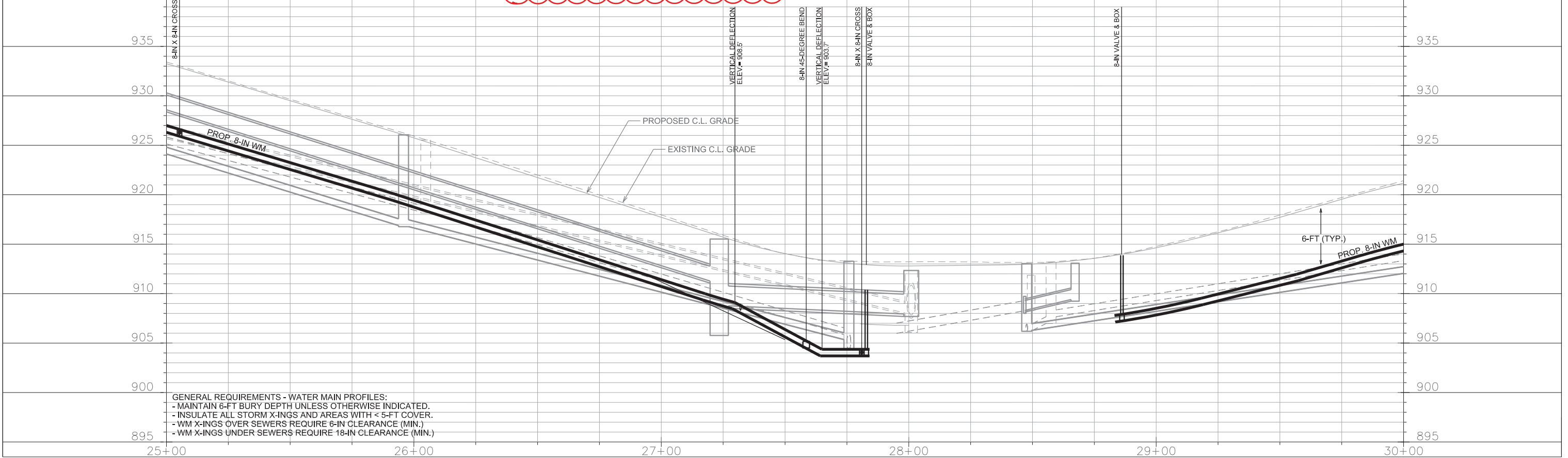
PLOT SCALE: \_\_\_\_\_

REV. DATE: \_\_\_\_\_

ORIGINATOR: CITY OF MADISON, STREETS DIVISION



REV: 4/14/17 - JOS  
 -WM EXTENDED THROUGH CHEROKEE  
 -CUT-IN CONNECTION ON N. CHEROKEE



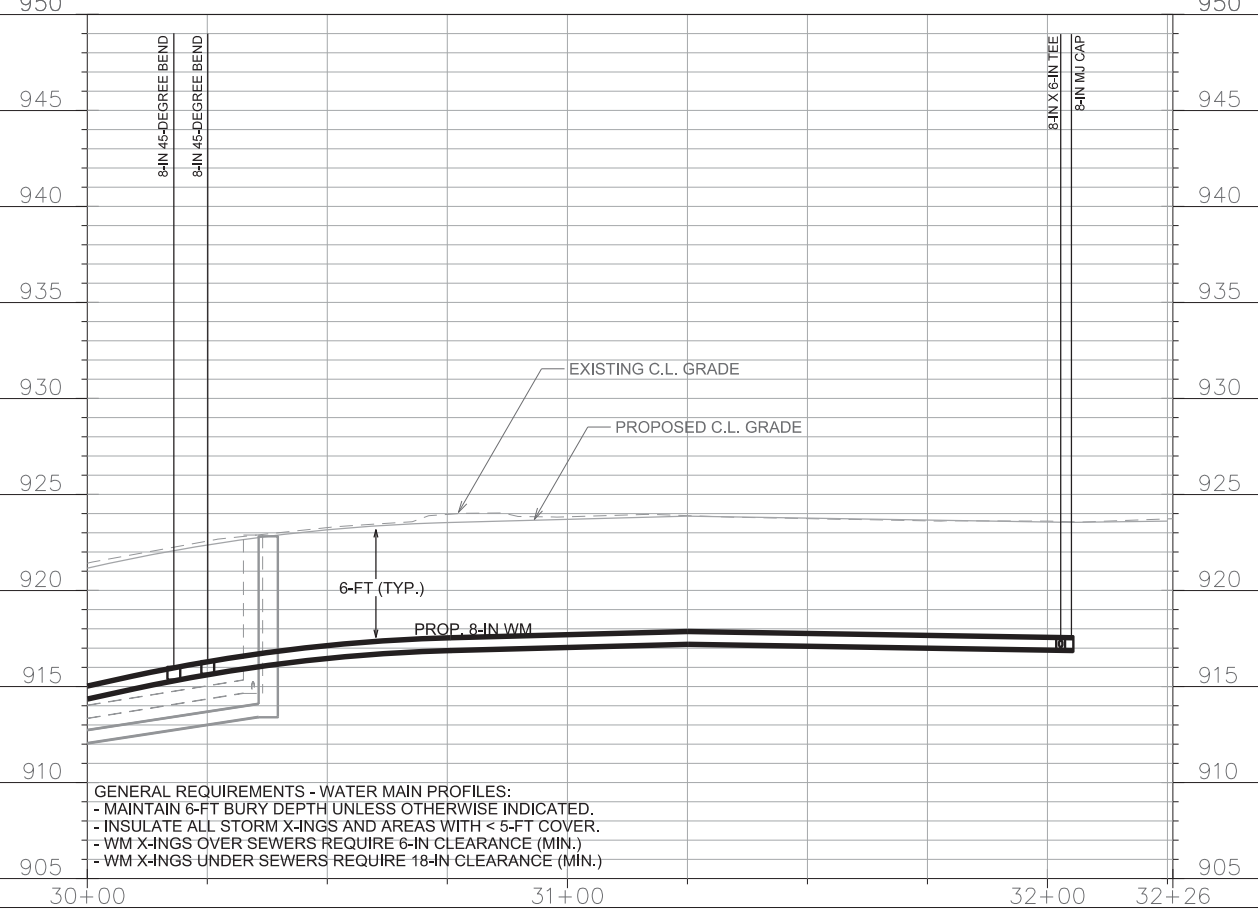
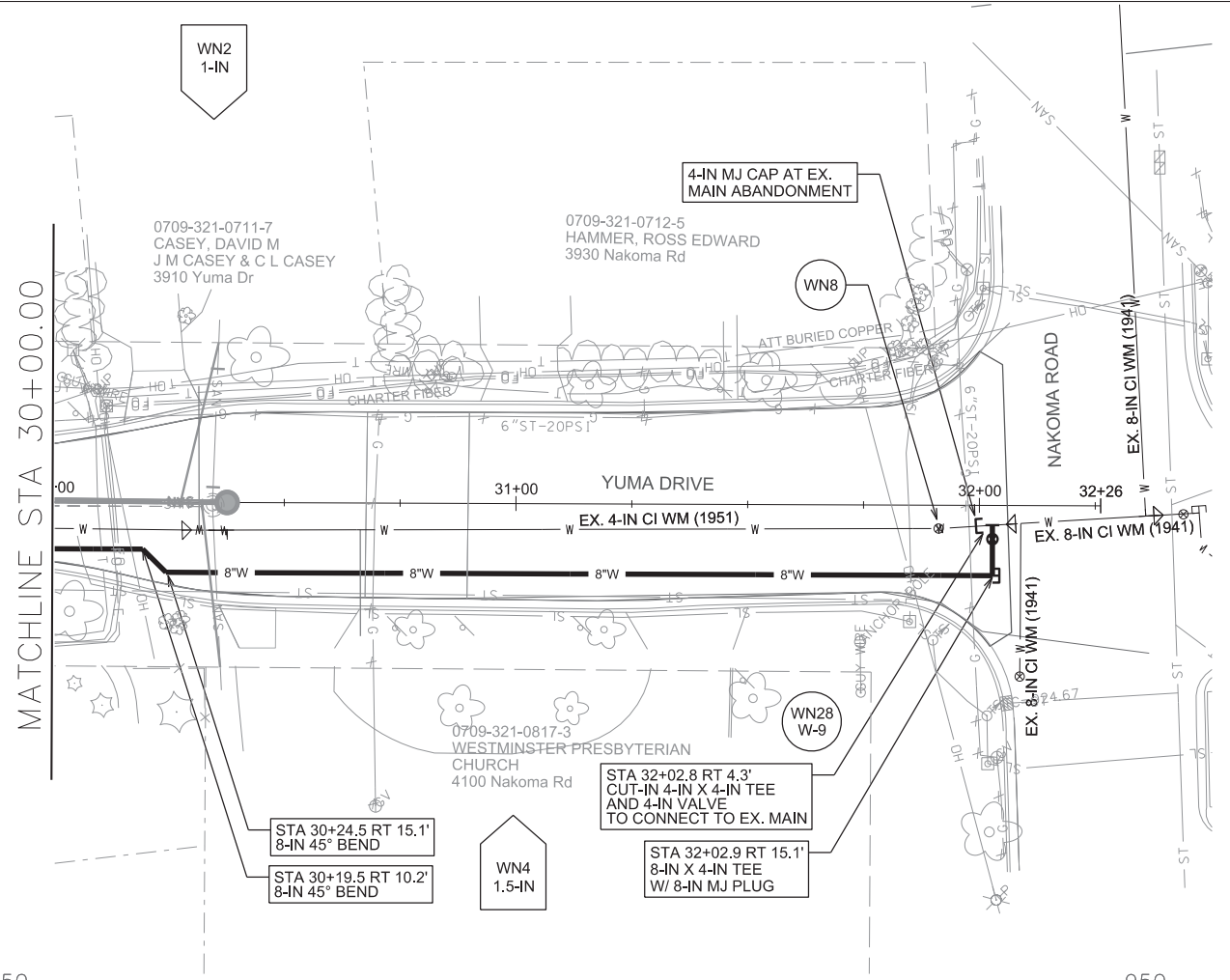
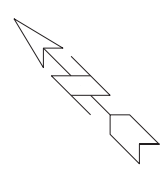
GENERAL REQUIREMENTS - WATER MAIN PROFILES:  
 - MAINTAIN 6-FT BURY DEPTH UNLESS OTHERWISE INDICATED.  
 - INSULATE ALL STORM X-INGS AND AREAS WITH < 5-FT COVER.  
 - WM X-INGS OVER SEWERS REQUIRE 6-IN CLEARANCE (MIN.)  
 - WM X-INGS UNDER SEWERS REQUIRE 18-IN CLEARANCE (MIN.)

PLOT SCALE: \_\_\_\_\_

PLOT NAME: \_\_\_\_\_

REV. DATE: \_\_\_\_\_

ORIGINATOR: CITY OF MADISON, STREETS DIVISION



GENERAL REQUIREMENTS - WATER MAIN PROFILES:  
 - MAINTAIN 6-FT BURY DEPTH UNLESS OTHERWISE INDICATED.  
 - INSULATE ALL STORM X-INGS AND AREAS WITH < 5-FT COVER.  
 - WM X-INGS OVER SEWERS REQUIRE 6-IN CLEARANCE (MIN.)  
 - WM X-INGS UNDER SEWERS REQUIRE 18-IN CLEARANCE (MIN.)

PLOT SCALE: \_\_\_\_\_  
 PLOT NAME: \_\_\_\_\_  
 REV. DATE: \_\_\_\_\_  
 ORIGINATOR: CITY OF MADISON, STREETS DIVISION

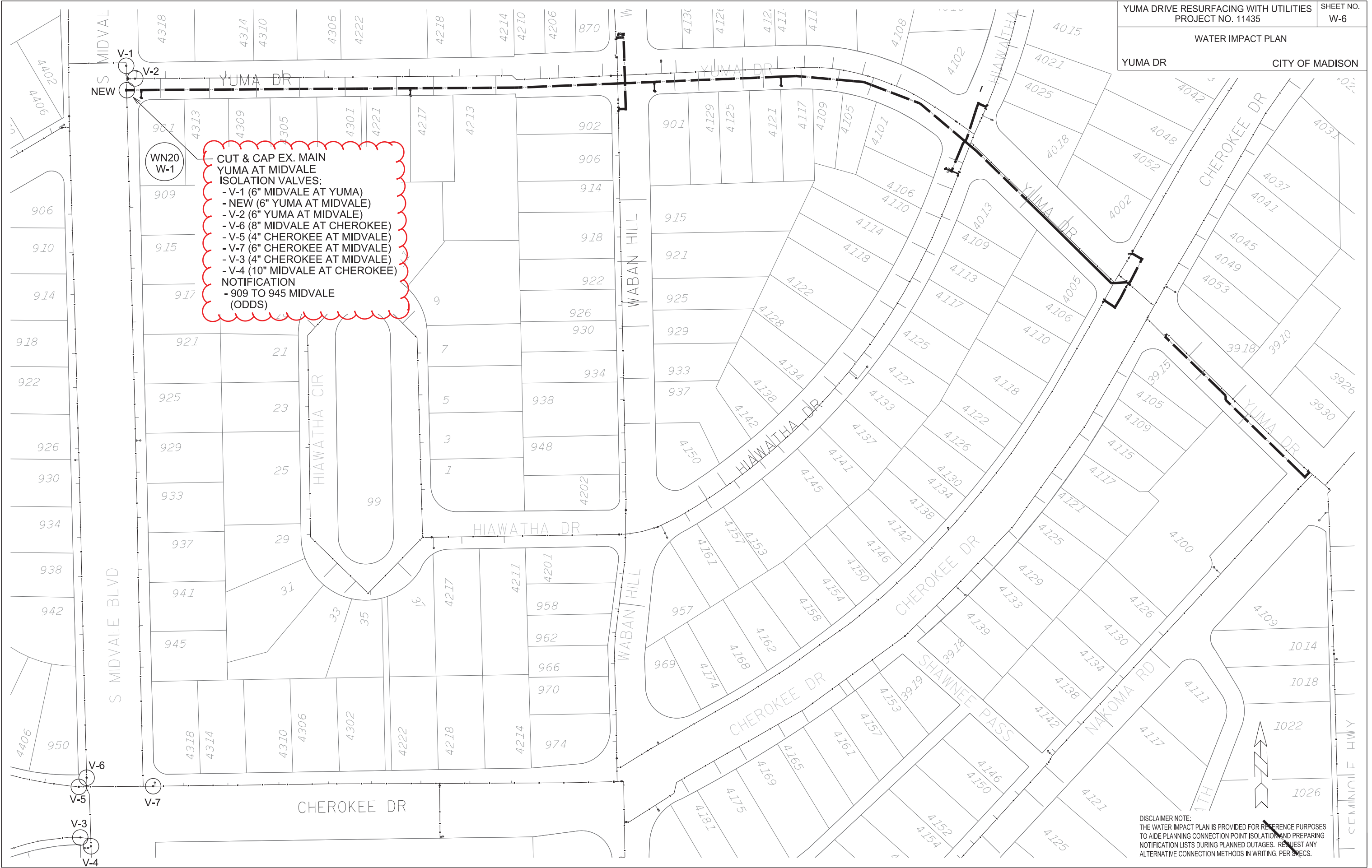


**CUT & CAP EX. MAIN YUMA AT MIDVALE ISOLATION VALVES:**

- V-1 (6" MIDVALE AT YUMA)
- NEW (6" YUMA AT MIDVALE)
- V-2 (6" YUMA AT MIDVALE)
- V-6 (8" MIDVALE AT CHEROKEE)
- V-5 (4" CHEROKEE AT MIDVALE)
- V-7 (6" CHEROKEE AT MIDVALE)
- V-3 (4" CHEROKEE AT MIDVALE)
- V-4 (10" MIDVALE AT CHEROKEE)

**NOTIFICATION**

- 909 TO 945 MIDVALE (ODDS)



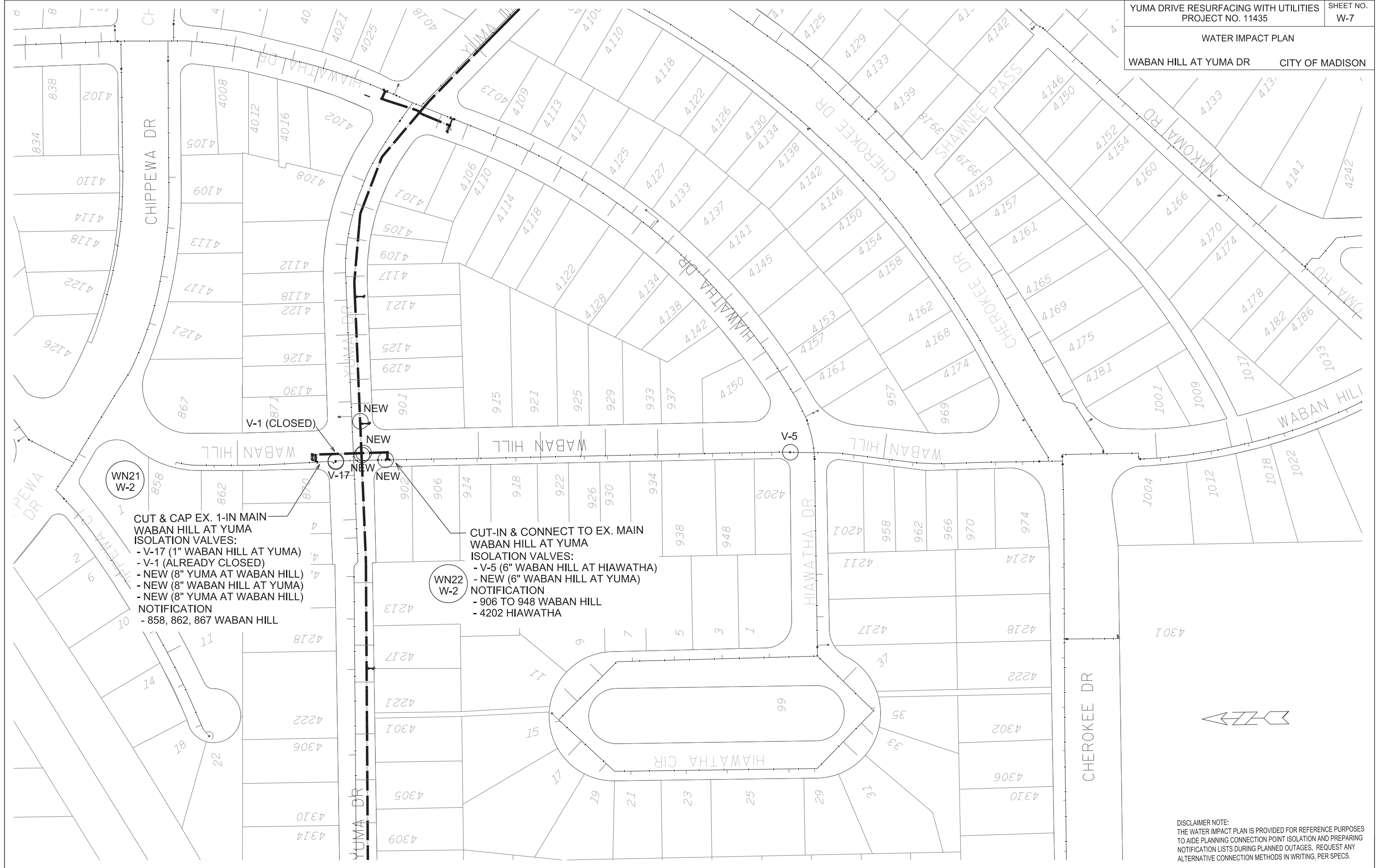
**DISCLAIMER NOTE:**  
THE WATER IMPACT PLAN IS PROVIDED FOR REFERENCE PURPOSES TO AIDE PLANNING CONNECTION POINT ISOLATION AND PREPARING NOTIFICATION LISTS DURING PLANNED OUTAGES. REQUEST ANY ALTERNATIVE CONNECTION METHODS IN WRITING, PER SPECS.

PLOT SCALE: \_\_\_\_\_

PLOT NAME: \_\_\_\_\_

REV. DATE: \_\_\_\_\_

ORIGINATOR: CITY OF MADISON, STREETS DIVISION



**CUT & CAP EX. 1-IN MAIN WABAN HILL AT YUMA ISOLATION VALVES:**

- V-17 (1" WABAN HILL AT YUMA)
- V-1 (ALREADY CLOSED)
- NEW (8" YUMA AT WABAN HILL)
- NEW (8" WABAN HILL AT YUMA)
- NEW (8" YUMA AT WABAN HILL)

**NOTIFICATION**

- 858, 862, 867 WABAN HILL

**CUT-IN & CONNECT TO EX. MAIN WABAN HILL AT YUMA ISOLATION VALVES:**

- V-5 (6" WABAN HILL AT HIAWATHA)
- NEW (6" WABAN HILL AT YUMA)

**NOTIFICATION**

- 906 TO 948 WABAN HILL
- 4202 HIAWATHA



**DISCLAIMER NOTE:**  
 THE WATER IMPACT PLAN IS PROVIDED FOR REFERENCE PURPOSES TO AIDE PLANNING CONNECTION POINT ISOLATION AND PREPARING NOTIFICATION LISTS DURING PLANNED OUTAGES. REQUEST ANY ALTERNATIVE CONNECTION METHODS IN WRITING, PER SPECS.

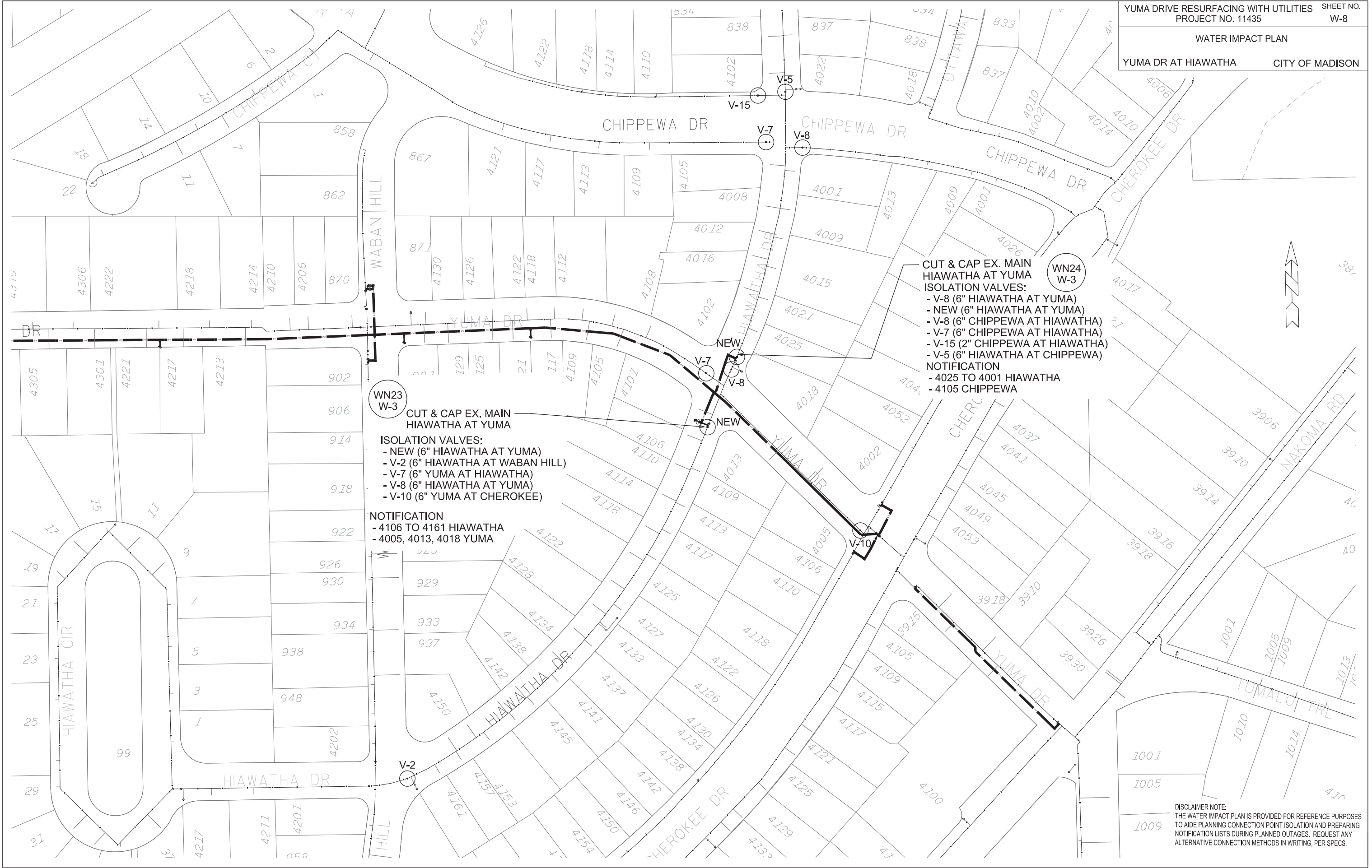
PLOT SCALE: \_\_\_\_\_

PLOT NAME: \_\_\_\_\_

REV. DATE: \_\_\_\_\_

ORIGINATOR: CITY OF MADISON, STREETS DIVISION





**CUT & CAP EX. MAIN HIAWATHA AT YUMA ISOLATION VALVES:**

- V-8 (6" HIAWATHA AT YUMA)
- NEW (6" HIAWATHA AT YUMA)
- V-8 (6" CHIPPEWA AT HIAWATHA)
- V-7 (6" CHIPPEWA AT HIAWATHA)
- V-15 (2" CHIPPEWA AT HIAWATHA)
- V-5 (6" HIAWATHA AT CHIPPEWA)

**NOTIFICATION**

- 4025 TO 4001 HIAWATHA
- 4105 CHIPPEWA

**WN23 W-3**

**CUT & CAP EX. MAIN HIAWATHA AT YUMA**

**ISOLATION VALVES:**

- NEW (6" HIAWATHA AT YUMA)
- V-2 (6" HIAWATHA AT WABAN HILL)
- V-7 (6" YUMA AT HIAWATHA)
- V-8 (6" HIAWATHA AT YUMA)
- V-10 (6" YUMA AT CHEROKEE)

**NOTIFICATION**

- 4106 TO 4161 HIAWATHA
- 4005, 4013, 4018 YUMA

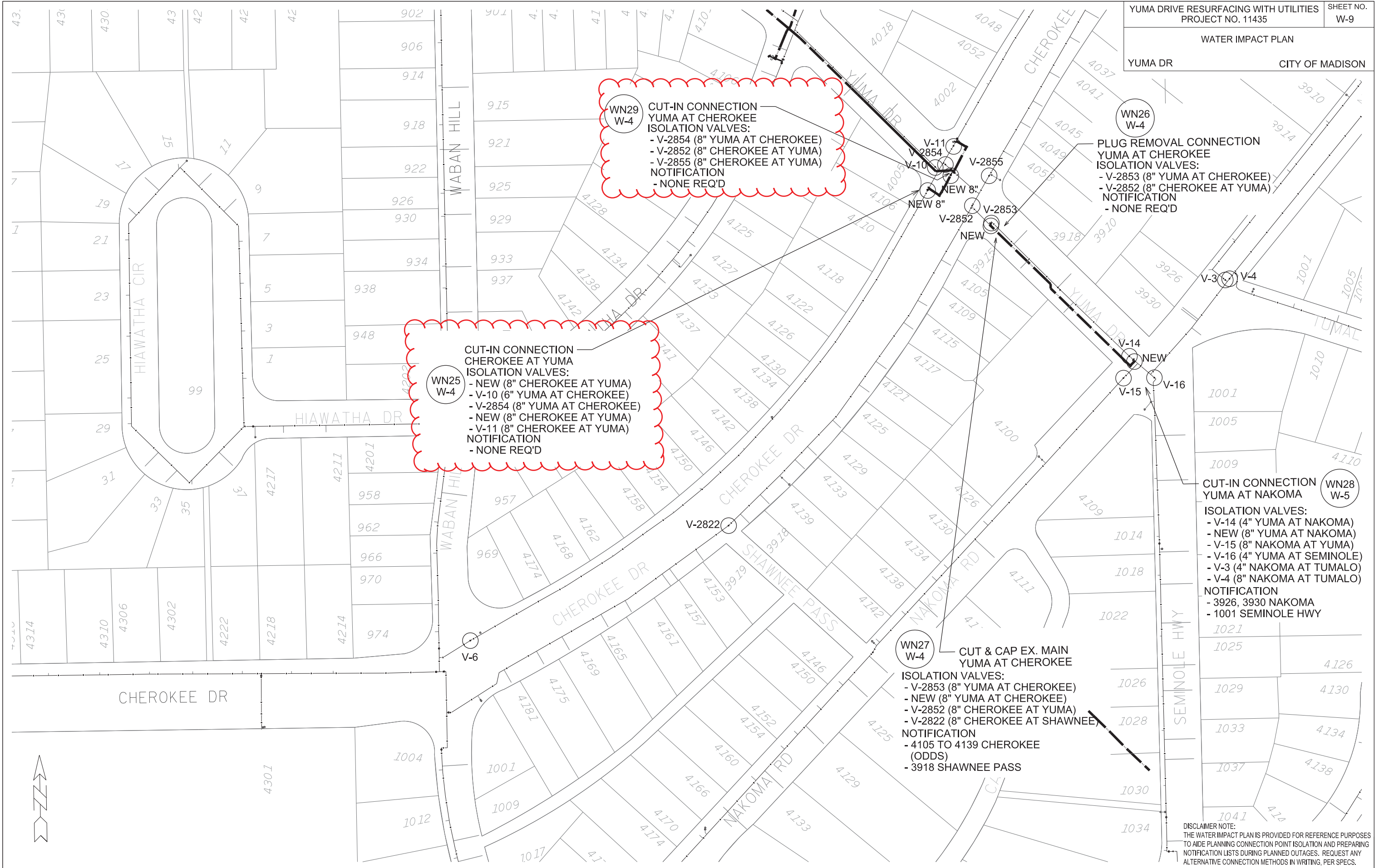
**DISCLAIMER NOTE:**  
THE WATER IMPACT PLAN IS PROVIDED FOR REFERENCE PURPOSES TO AIDE PLANNING CONNECTION POINT ISOLATION AND PREPARING NOTIFICATION LISTS DURING PLANNED OUTAGES. REQUEST ANY ALTERNATIVE CONNECTION METHODS IN WRITING, PER SPECS.

PLOT SCALE: \_\_\_\_\_

PLOT NAME: \_\_\_\_\_

REV. DATE: \_\_\_\_\_

ORIGINATOR: CITY OF MADISON, STREETS DIVISION



**WN29 W-4**  
 CUT-IN CONNECTION  
 YUMA AT CHEROKEE  
 ISOLATION VALVES:  
 - V-2854 (8" YUMA AT CHEROKEE)  
 - V-2852 (8" CHEROKEE AT YUMA)  
 - V-2855 (8" CHEROKEE AT YUMA)  
 NOTIFICATION  
 - NONE REQ'D

**WN25 W-4**  
 CUT-IN CONNECTION  
 CHEROKEE AT YUMA  
 ISOLATION VALVES:  
 - NEW (8" CHEROKEE AT YUMA)  
 - V-10 (6" YUMA AT CHEROKEE)  
 - V-2854 (8" YUMA AT CHEROKEE)  
 - NEW (8" CHEROKEE AT YUMA)  
 - V-11 (8" CHEROKEE AT YUMA)  
 NOTIFICATION  
 - NONE REQ'D

**WN26 W-4**  
 PLUG REMOVAL CONNECTION  
 YUMA AT CHEROKEE  
 ISOLATION VALVES:  
 - V-2853 (8" YUMA AT CHEROKEE)  
 - V-2852 (8" CHEROKEE AT YUMA)  
 NOTIFICATION  
 - NONE REQ'D

**WN27 W-4**  
 CUT & CAP EX. MAIN  
 YUMA AT CHEROKEE  
 ISOLATION VALVES:  
 - V-2853 (8" YUMA AT CHEROKEE)  
 - NEW (8" YUMA AT CHEROKEE)  
 - V-2852 (8" CHEROKEE AT YUMA)  
 - V-2822 (8" CHEROKEE AT SHAWNEE)  
 NOTIFICATION  
 - 4105 TO 4139 CHEROKEE  
 (ODDS)  
 - 3918 SHAWNEE PASS

**WN28 W-5**  
 CUT-IN CONNECTION  
 YUMA AT NAKOMA  
 ISOLATION VALVES:  
 - V-14 (4" YUMA AT NAKOMA)  
 - NEW (8" YUMA AT NAKOMA)  
 - V-15 (8" NAKOMA AT YUMA)  
 - V-16 (4" YUMA AT SEMINOLE)  
 - V-3 (4" NAKOMA AT TUMALO)  
 - V-4 (8" NAKOMA AT TUMALO)  
 NOTIFICATION  
 - 3926, 3930 NAKOMA  
 - 1001 SEMINOLE HWY

PLOT SCALE: \_\_\_\_\_  
 PLOT NAME: \_\_\_\_\_  
 REV. DATE: \_\_\_\_\_  
 ORIGINATOR: CITY OF MADISON, STREETS DIVISION

DISCLAIMER NOTE:  
 THE WATER IMPACT PLAN IS PROVIDED FOR REFERENCE PURPOSES  
 TO AIDE PLANNING CONNECTION POINT ISOLATION AND PREPARING  
 NOTIFICATION LISTS DURING PLANNED OUTAGES. REQUEST ANY  
 ALTERNATIVE CONNECTION METHODS IN WRITING, PER SPECS.





PLOT SCALE: \_\_\_\_\_

PLOT NAME: \_\_\_\_\_

REV. DATE: \_\_\_\_\_

ORIGINATOR: CITY OF MADISON, STREETS DIVISION

**CONSTRUCTION NOTES:**

1. CONSTRUCT NEW WATER MAIN 6.0' BELOW FINISHED GRADE, UNLESS OTHERWISE NOTED. INSULATE MAIN WITH POLYSTYRENE BOARD AT UTILITY CROSSINGS OR OTHER AREAS IDENTIFIED BY ENGINEER AS HAVING INADEQUATE COVER.
2. VERIFY SIZE OF EXISTING WATER SERVICES AND RECONNECT SERVICES AS INDICATED.
3. MINIMIZE DISRUPTION OF SERVICE TO EXISTING CUSTOMERS. NOTIFY PER CONTRACT REQUIREMENTS OF ANY PLANNED WATER OUTAGE.
4. THE EXISTING UTILITIES SHOWN ON THIS PLAN REPRESENT THE BEST INFORMATION AVAILABLE TO THE WATER UTILITY AT THE TIME OF PLAN PREPARATION. CONTRACTOR IS RESPONSIBLE FOR HAVING EACH UTILITY LOCATED PRIOR TO COMMENCING WORK.

- WN1 REPLACE THE EXISTING LEAD SERVICE WITH A NEW COPPER SERVICE.
- WN2 EXTEND AND RECONNECT THE EXISTING COPPER SERVICE TO THE NEW WATER MAIN.
- WN3 EXISTING SERVICE TO BE ABANDONED WHEN THE WATER MAIN IS CUT OFF.
- WN4 DISCONNECT FROM THE OLD WATER MAIN AND RECONNECT THE EXISTING COPPER WATER SERVICE LATERAL TO THE NEW WATER MAIN.
- WN5 RELOCATE THE EXISTING FIRE HYDRANT.
- WN6 ABANDON WATER VALVE ACCESS STRUCTURE.
- WN7 FURNISH AND INSTALL THE NEW TOP SECTION FOR THE WATER ACCESS STRUCTURE.
- WN8 ABANDON THE VALVE BOX.
- WN9 FURNISH THE DITCH, COMPACTION, AND ALL MATERIALS AND LABOR FOR THE INSTALLATION OF NEW SERVICE LATERAL.
- WN10 REMOVE AND SALVAGE EXISTING HYDRANT
- WN11 REPLACE THE EXISTING COPPER SERVICE WITH A COPPER SERVICE
- WN20+ SEE WATER IMPACT PLAN FOR CONNECTION POINT ISOLATION AND WATER SHUT-OFF NOTIFICATION INFORMATION.

REV: 4/14/17 - JOS  
 MATERIALS UPDATED TO MATCH DESIGN CHANGES

**ESTIMATE OF MATERIALS SUPPLIED BY CONTRACTOR:**

*\* ESTIMATE OF MATERIALS IS FOR INFORMATION ONLY. ENGINEER DOES NOT GUARANTEE ACCURACY OF MATERIAL TAKE-OFF.*

- |                       |                      |
|-----------------------|----------------------|
| 20-FT - 4-IN PIPE     | 3 - 6-IN 90° BEND    |
| 120-FT - 6-IN PIPE    | 5 - 8-IN 11.25° BEND |
| 2440-FT - 8-IN PIPE   | 2 - 8-IN 22.5° BEND  |
| 1 - 4-IN VALVE & BOX  | 4 - 8-IN 45° BEND    |
| 9 - 6-IN VALVE & BOX  | 2 - 8-IN 90° BEND    |
| 11 - 8-IN VALVE & BOX | 7 - 8-IN MJ PLUG     |
| 1 - 4-IN X 4-IN TEE   | 1 - 1-IN MJ CAP      |
| 1 - 8-IN X 4-IN TEE   | 1 - 4-IN MJ CAP      |
| 7 - 8-IN X 6-IN TEE   | 5 - 6-IN MJ CAP      |
| 2 - 8-IN X 8-IN TEE   | 3 - 8-IN MJ CAP      |
| 2 - 8-IN X 6-IN CROSS | 6 - HYDRANT          |
| 3 - 8-IN X 8-IN CROSS | 2840-FT - POLY WRAP  |
|                       | 144 - FT INSULATION  |

**MATERIALS SUPPLIED BY CITY:**

*\* ESTIMATE OF MATERIALS IS FOR INFORMATION ONLY. ENGINEER DOES NOT GUARANTEE ACCURACY OF MATERIAL TAKE-OFF.*

- 1 - 8-IN TAPPING SLEEVE
- 1 - 8-IN TAPPING VALVE

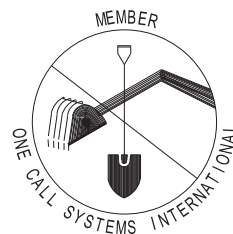
**ESTIMATE OF MATERIALS SALVAGED:**

*\* ESTIMATE OF MATERIALS IS FOR INFORMATION ONLY. ENGINEER DOES NOT GUARANTEE ACCURACY OF MATERIAL TAKE-OFF.*

- 1 - 8-IN MJ PLUG

TO OBTAIN LOCATION OF PARTICIPANTS' UNDERGROUND FACILITIES BEFORE YOU DIG IN WISCONSIN  
 CALL DIGGERS HOTLINE  
 TOLL FREE  
 811 OR 1-800-242-8511  
 FAX-A-LOCATE 1-800-338-3860  
 TDD (FOR HEARING IMPAIRED) 1-800-542-2289

WIS. STATUTE 182.0175 (1974) REQUIRES MIN. OF 3 WORK DAYS NOTICE BEFORE YOU EXCAVATE.

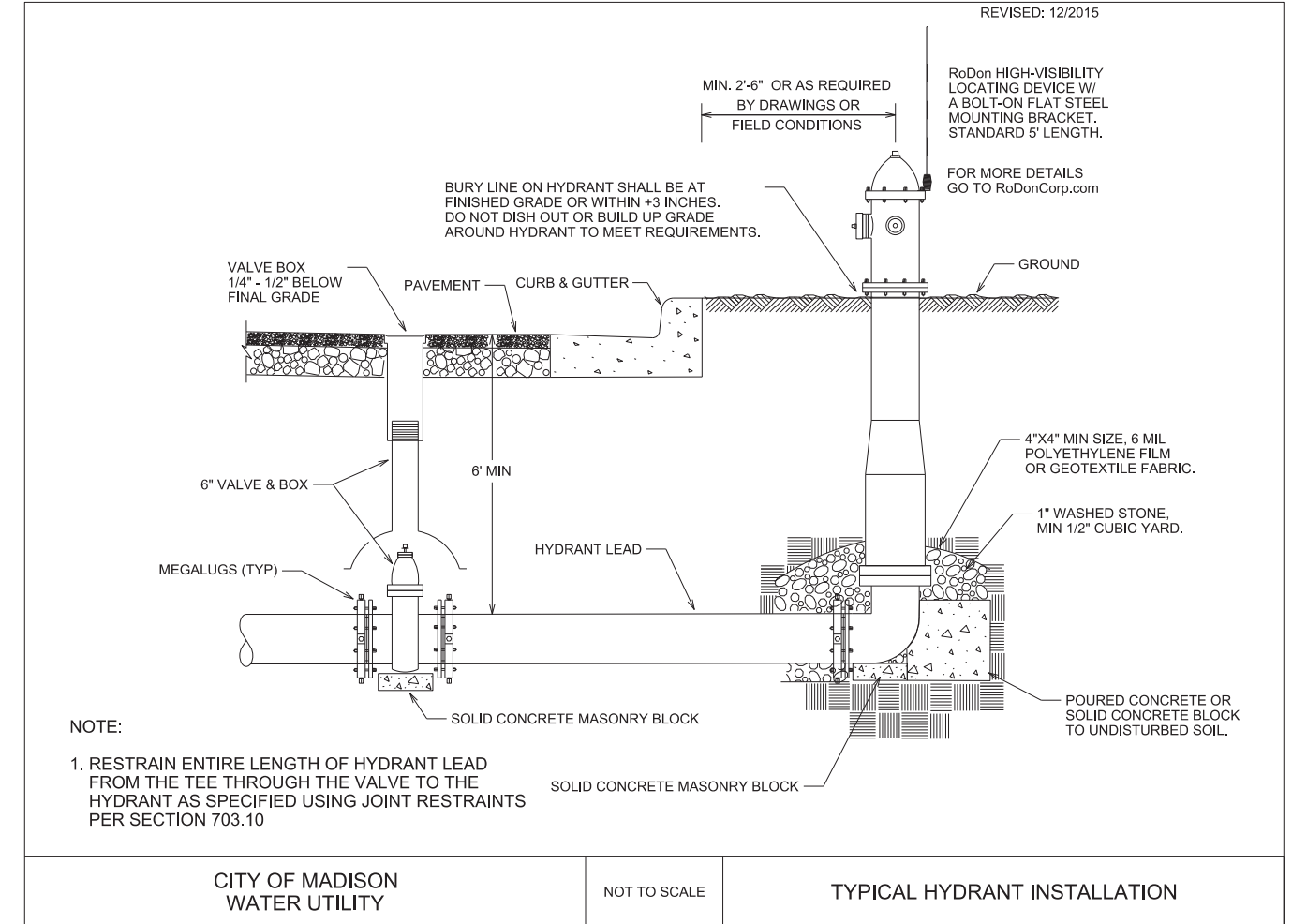


**DISCLAIMER NOTE:**  
 UTILITY LOCATIONS SHOWN ARE APPROXIMATE ONLY. IT SHALL BE THE CONTRACTOR'S RESPONSIBILITY TO DETERMINE THE EXACT HORIZONTAL AND VERTICAL LOCATION OF ALL EXISTING UNDERGROUND AND OVERHEAD UTILITIES PRIOR TO COMMENCING WORK.

**PART VII - WATER MAINS AND SERVICE LATERALS**

**DETAIL DRAWING NO. 7.04**

REVISED: 12/2015



PLOT SCALE: \_\_\_\_\_ PLOT NAME: \_\_\_\_\_ REV. DATE: \_\_\_\_\_ ORIGINATOR: CITY OF MADISON, STREETS DIVISION